

# SIMPLE YET ELEGANT

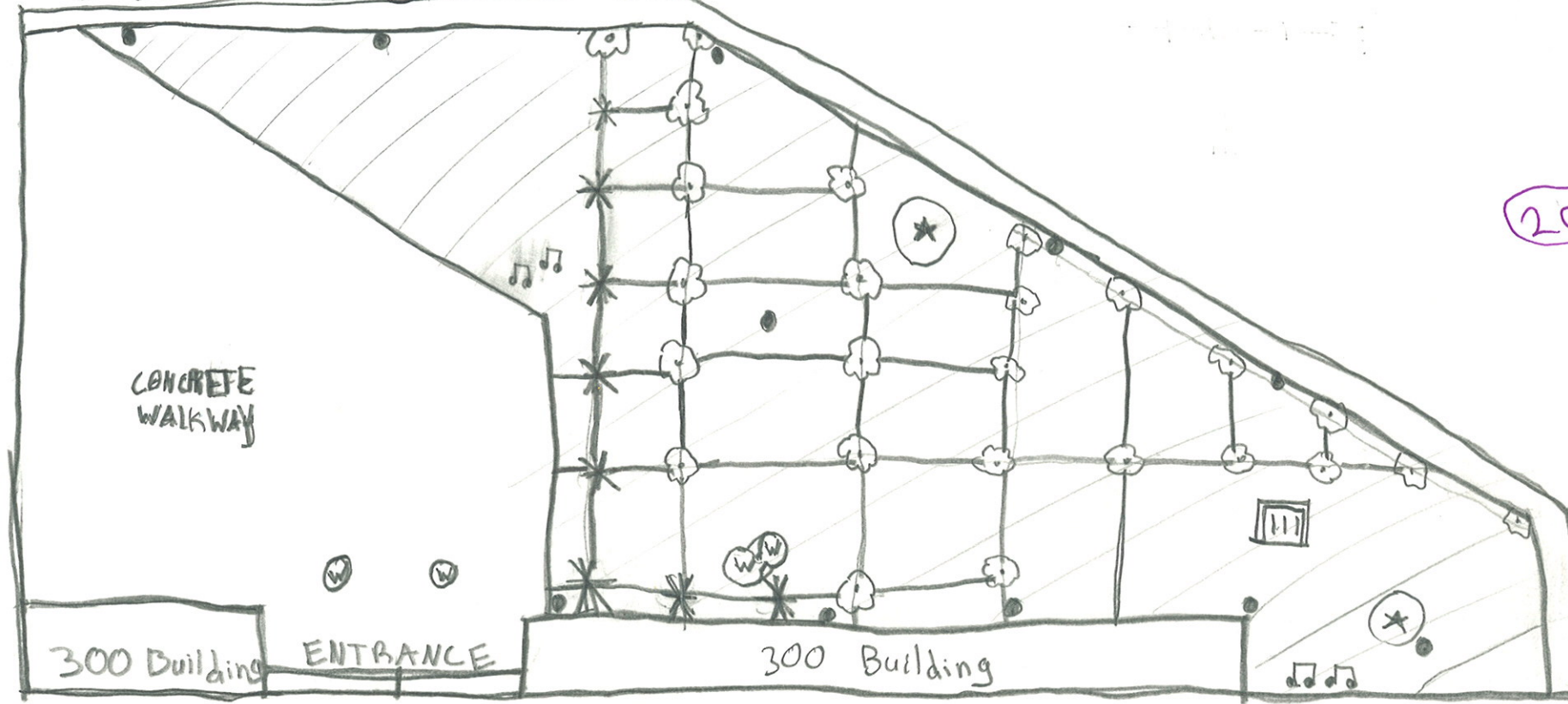
Problem: We need a walkway to go through a garden/Lounge area.

Concept: The idea this garden was so that people could go through the area easily if you wanted to, but if you wanted to you could stay a while.

By: Jake M. DeSilva

# 300 BUILDING WALKWAY PROJECT ✓ Site inventory and Analysis

Jake  
DeSilva



## Legend: ✓

🌸: Bush #1

🚰: Drain

🌳: Tree

🎵: Noise

•: Sprinkler

Ⓜ: water access hole

\*: Bush #2

12 SPRinklers (cap off) ✓

Keep water access hole

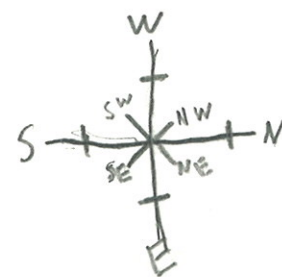
Was used for Plant Sceanery

Now used for Walkway

Soil Type:

Poor Clay

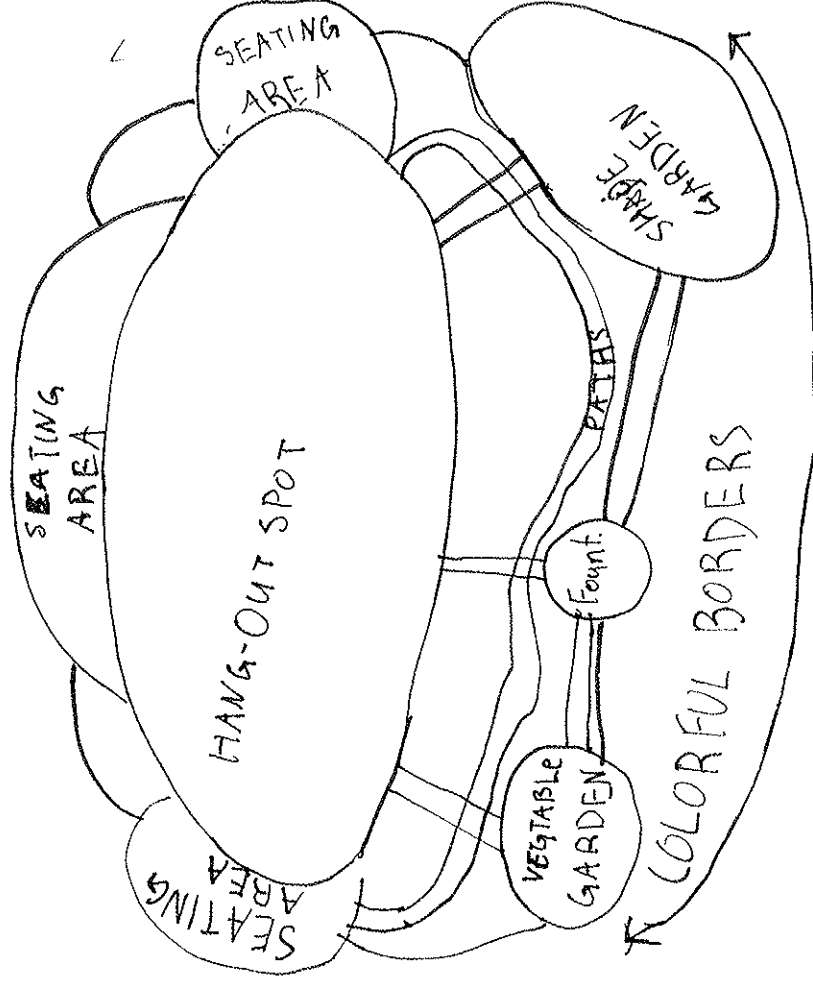
Covered with wood chips



# PROGRAM ANALYSIS

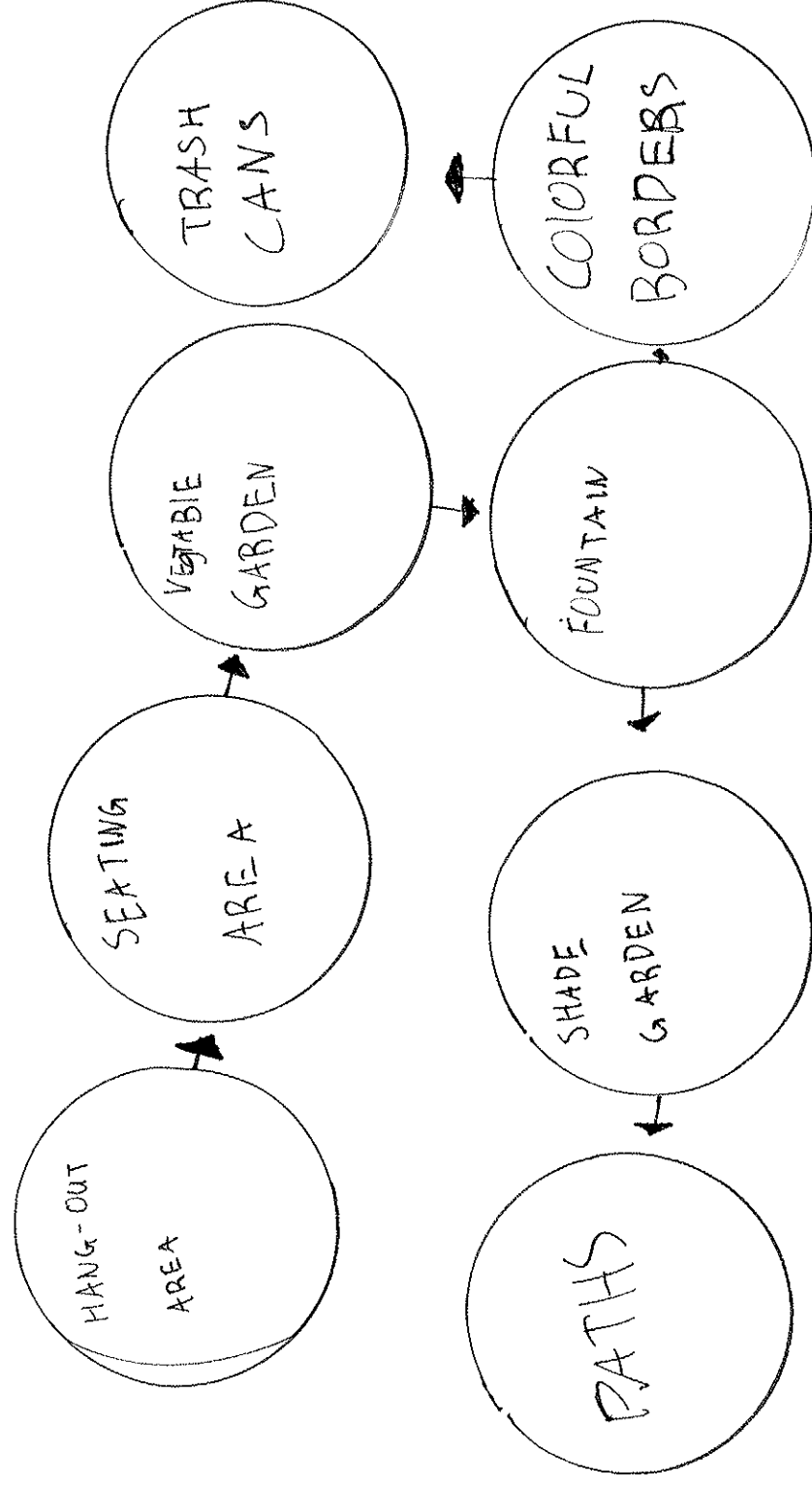
## PROS:

Great place  
to relax  
Beautiful  
Scenery,  
plenty of  
room to  
hang out.



## CONS:

Could be  
Very expensive  
Getting  
water to the  
fountain, too  
much  
maintenance  
for such a  
small place.



# PROGRAM DEVELOPMENT

TACO STATION

WATER FALL

HAIF PIPE

ZEN GARDEN

Jacuzzi

Gondalla

MOVING SIDEWALK

POOL

SMALL SKATE PARK

FOAM PIT

BOUNCEHOUSE/PETTING ZOO

Trampoline

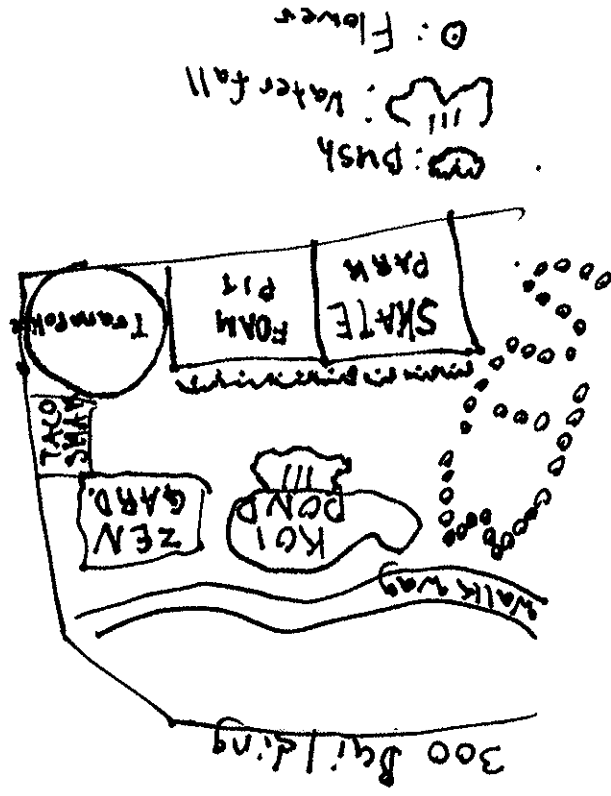
Koi Pond

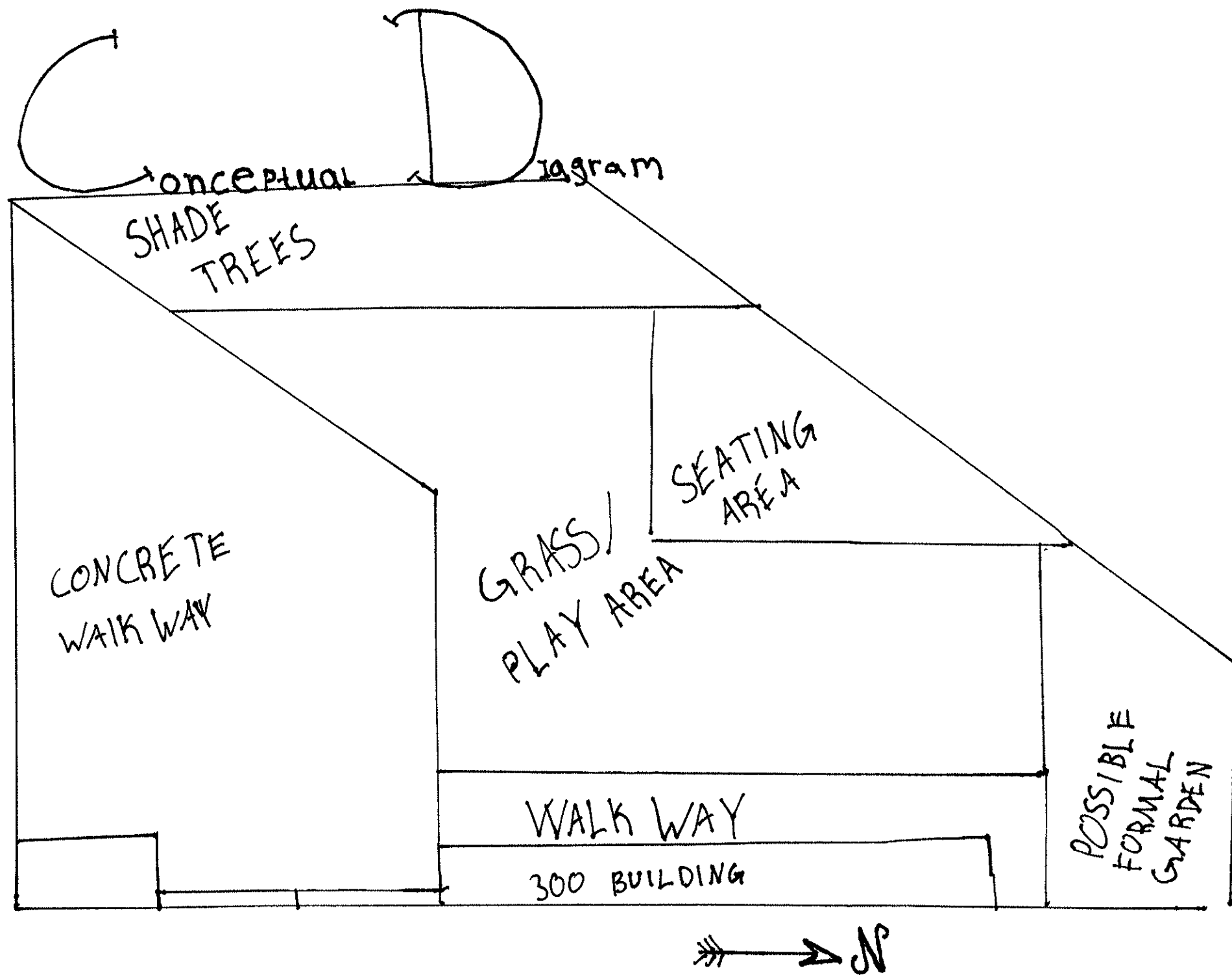
Pros:

Fun place  
to be for  
all ages,  
variety of  
activities,  
place to  
eat.

Cons:

Could be  
Dangerous,  
too expensive,  
too small of  
a place for  
so many  
things



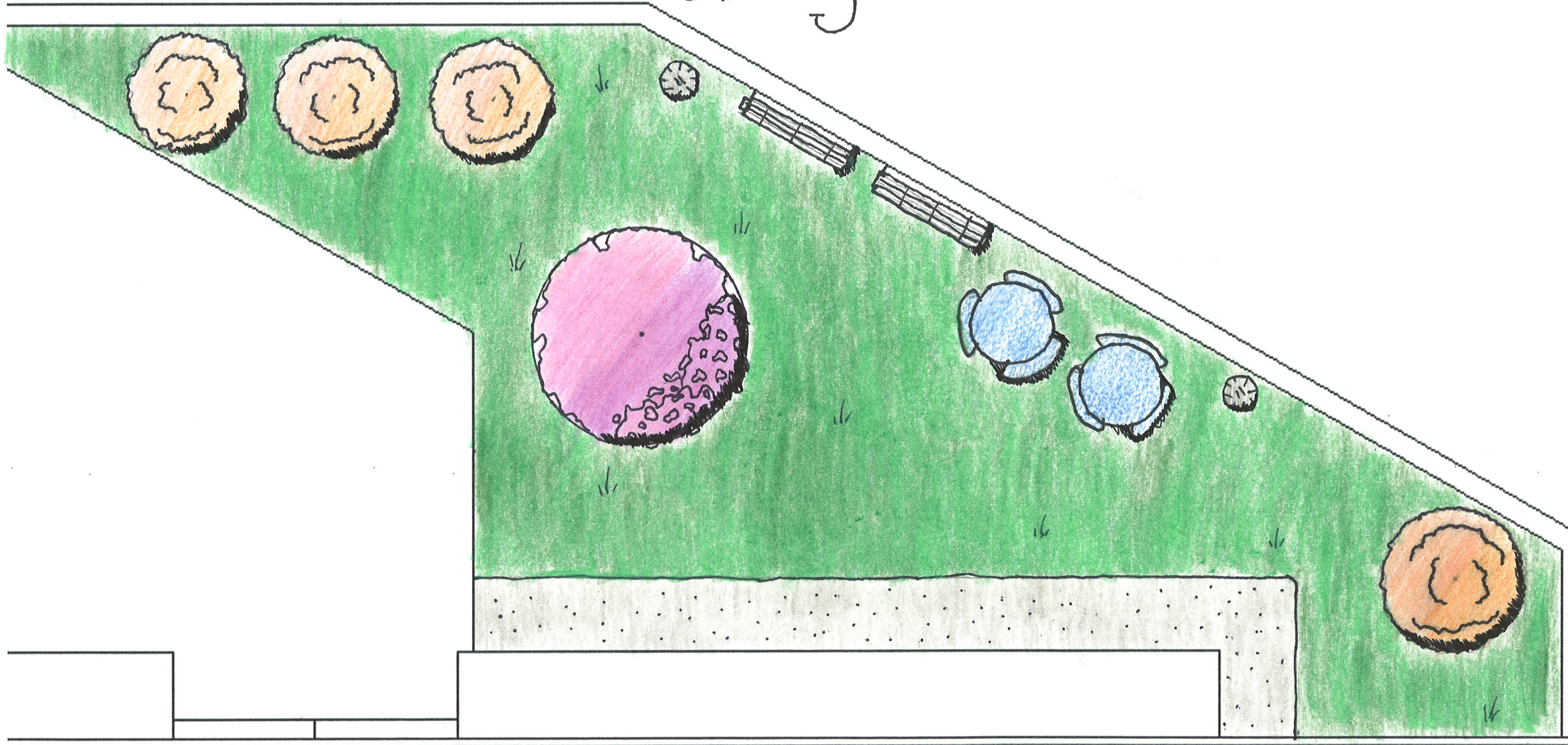


Jake DeSilva



# Schematic Design

Jake DeSilva



SCALE: 1/4" = 1'-0"

